



POLICY FOR SUPPORTING PUPILS WITH MEDICAL CONDITIONS

Policy Created	September 2015
Date for Review	September 2018
Principal	Darren Foulke
Chair of Governors	Mary Tailby

CONTENTS

1	INTRODUCTION.....	3
2	ROLES AND RESPONSIBILITIES.....	3
3	PROCEDURE WHEN NOTIFICATION IS RECEIVED THAT A PUPIL HAS A MEDICAL CONDITION.....	4
4	INDIVIDUAL HEALTHCARE PLANS (IHCP).....	4
5	ADMINISTERING MEDICINES.....	4
6	ACTION IN EMERGENCIES.....	4
7	ACTIVITIES BEYOND THE USUAL CURRICULUM.....	5
8	UNACCEPTABLE PRACTICE.....	5
9	COMPLAINTS.....	5
10	EQUALITY IMPACT STATEMENT.....	5
	APPENDIX 1: PROCESS FOR DEVELOPING INDIVIDUAL HEALTHCARE PLANS.....	7
	APPENDIX 2: LEAF ACADEMY TRUST INSURANCE INFORMATION.....	8

DRAFT

1 INTRODUCTION

- The Children and Families Act 2014 includes a duty for schools to support children with medical conditions.
- Where children have a disability, the requirements of the Equality Act 2010 will also apply. Where children have an identified special need, the SEN Code of Practice will also apply.
- All children have a right to access the full curriculum, adapted to their medical needs and to receive the on-going support, medicines or care that they require at school to help them manage their condition and keep them well.
- We recognise that medical conditions may impact social and emotional development as well as having educational implications.
- Our Academy will build relationships with healthcare professionals and other agencies and in order to support effectively pupils with medical condition.

2 ROLES AND RESPONSIBILITIES

The Named Person(s) responsible for children with medical conditions requiring an Individual Healthcare Plan (IHCP) is **Tracey Wheatley / Suzanne Ruddy** (Inclusion Manager), assisted by **Bev Fisher** (SEN Administrator). These people are responsible for:

- Informing relevant staff of medical conditions in line with data protection and child protection policies.
- Arranging training for identified staff, including the administration of medicine.
- Ensuring that staff are aware of the need to communicate necessary information about medical conditions to supply staff and where appropriate, taking the lead in communicating this information.
- Assisting with risk assessment for school visits and other activities outside of the normal timetable.

In addition, the Inclusion Manager and SEN Administrator are responsible for:

- Developing, monitoring and reviewing Individual Healthcare Plans.
- Working together with parents, pupils, healthcare professionals and other agencies.

The Governing Body is responsible for:

- Determining the Academy's general policy and ensuring that arrangements are in place to support children with medical conditions.

The Principal is responsible for:

- Overseeing the management and provision of support for children with medical conditions.
- Ensuring that sufficient trained numbers of staff are available to implement the policy and deliver Individual Healthcare Plans, including covering absence and staff turnover.
- Ensuring that Academy staff are appropriately insured and are aware that they are insured.

Teachers and Support Staff are responsible for:

- The day to day management of the medical conditions of children they work with, in line with training received
- Working with the named person, ensure that risk assessments are carried out for school visits and other activities outside of the normal timetable
- Providing information about medical conditions to supply staff who will be covering their role where the need for supply staff is known in advance

The school nurse is responsible for:

- Providing support for staff on implementing a child's individual healthcare plan and providing advice and liaison including with regard to training.

The Parent(s) / Carer(s) is/are responsible for:

- Informing the Academy of any medical needs their child may have.

- Keeping the Academy updated with current information about their child's health and medical needs.
- Where appropriate, provide medical evidence to support their child's medical need.
- Providing up-to-date emergency contact details, including emergency telephone numbers.

3 PROCEDURE WHEN NOTIFICATION IS RECEIVED THAT A PUPIL HAS A MEDICAL CONDITION

- The named person will liaise with relevant individuals, including as appropriate parents, the individual pupil, health professionals and other agencies to decide on the support to be provided to the child
- Where appropriate, an Individual Healthcare Plan will be drawn up
- Appendix A outlines the process for developing individual healthcare plans

4 INDIVIDUAL HEALTHCARE PLANS (IHCP)

- An IHCP will be written for ALL pupils with a medical condition.
- The IHCP will clarify what needs to be done, when and by whom and include information about the child's condition, special requirements, medicines required, what constitutes an emergency and action to take in the case of an emergency clarity
- Where a child has SEN but does not have a statement or Education Healthcare Plan(EHCP), their special educational needs will be mentioned in their IHCP.
- IHCPs will be reviewed annually, or earlier if evidence is provided that a child's needs have changed

5 ADMINISTERING MEDICINES

- Medicines will only be administered by members of academy staff who have been trained. First Aiders cannot administer medicines unless they have received the proper training.
- Written consent from parents must be received before administering any medicine to a child at the Academy.
- Medicines will only be accepted for administration if they are:
 - In-date
 - Labelled
 - Provided in the original container as dispensed by a pharmacist and include instructions for administration, dosage and storage.
 - The exception to this is insulin which must be in date but will generally be available inside an insulin pen or pump, rather than in its original container.
 - Antibiotics must have been prescribed and taken at least 24 hours before being accepted for administration within the academy, due to the risk of allergic reaction / side effects.
- Medicines should be stored safely. Children should know where their medicines are at all times.
- Written records will be kept of all medicines administered to children.
- After discussion with parents, some pupils who are competent to manage their own health needs and medicines can be allowed to administer their own medicine and/or attend to their own health needs, under supervision from a member of trained Academy staff (First Aiders and medicine trained staff).

6 ACTION IN EMERGENCIES

A copy of this information will be displayed in the Academy office:

- Request an ambulance – dial 999 and be ready with the information below. Speak slowly and clearly and be ready to repeat information if asked.
 1. The Academy's telephone number: 0113 2739190
 2. Your name
 3. Your location: Rothwell C of E Primary Academy, Queensway, Rothwell, Leeds, LS26 0NB
 4. Provide the exact location of the patient within the Academy.
 5. Provide the name of the child/adult and a brief description of their symptoms

6. Inform ambulance control of the best entrance to use and state that the crew will be met and taken to the patient

 - Ask office staff to contact premises to open relevant gates for entry
 - Contact the parents to inform them of the situation
 - A member of staff should stay with the pupil until the parent/carer arrives. If a parent/carer does not arrive before the pupil is transported to hospital, a member of staff should accompany the child in the ambulance.

7 ACTIVITIES BEYOND THE USUAL CURRICULUM

- Reasonable adjustments will be made to enable pupils with medical needs to participate fully and safely in day trips, residential visits, sporting activities and other activities beyond the usual curriculum
- When carrying out risk assessments, parents/carers, pupils and healthcare professionals will be consulted where appropriate

8 UNACCEPTABLE PRACTICE

The following items are not generally acceptable practice with regard to children with medical conditions, although the Academy will use discretion to respond to each individual case in the most appropriate manner:

- preventing children from easily accessing their inhalers and medication and administering their medication when and where necessary.
- assuming that every child with the same condition requires the same treatment.
- ignore the views of the child or their parents; or ignore medical evidence or opinion, (although this may be challenged).
- sending children with medical conditions home frequently or prevent them from staying for normal school activities, including lunch, unless this is specified in their individual healthcare plans (IHCP).
- if the child becomes ill, sending them to the Academy office or medical room unaccompanied or with someone unsuitable.
- penalising children for their attendance record if their absences are related to their medical condition e.g. hospital appointments.
- preventing pupils from drinking, eating or taking toilet or other breaks whenever they need to in order to manage their medical condition effectively.
- requiring parents, or otherwise making them feel obliged, to attend school to administer medication or provide medical support to their child, including with toileting issues. No parent should have to give up working because the Academy is failing to support their child's medical needs.
- preventing children from participating, or create unnecessary barriers to children participating in any aspect of Academy life, including school trips, e.g. by requiring parents to accompany the child.

9 COMPLAINTS

- An individual wishing to make a complaint about actions in supporting a child with medical conditions should discuss this with the Academy in the first instance
- If the issue is not resolved, then a formal complaint may be made, following the complaints procedure as set out in the Parent/Carer Complaints Policy (Spring 2014). This policy can be found on our website at www.rothwellcofe.org.uk.

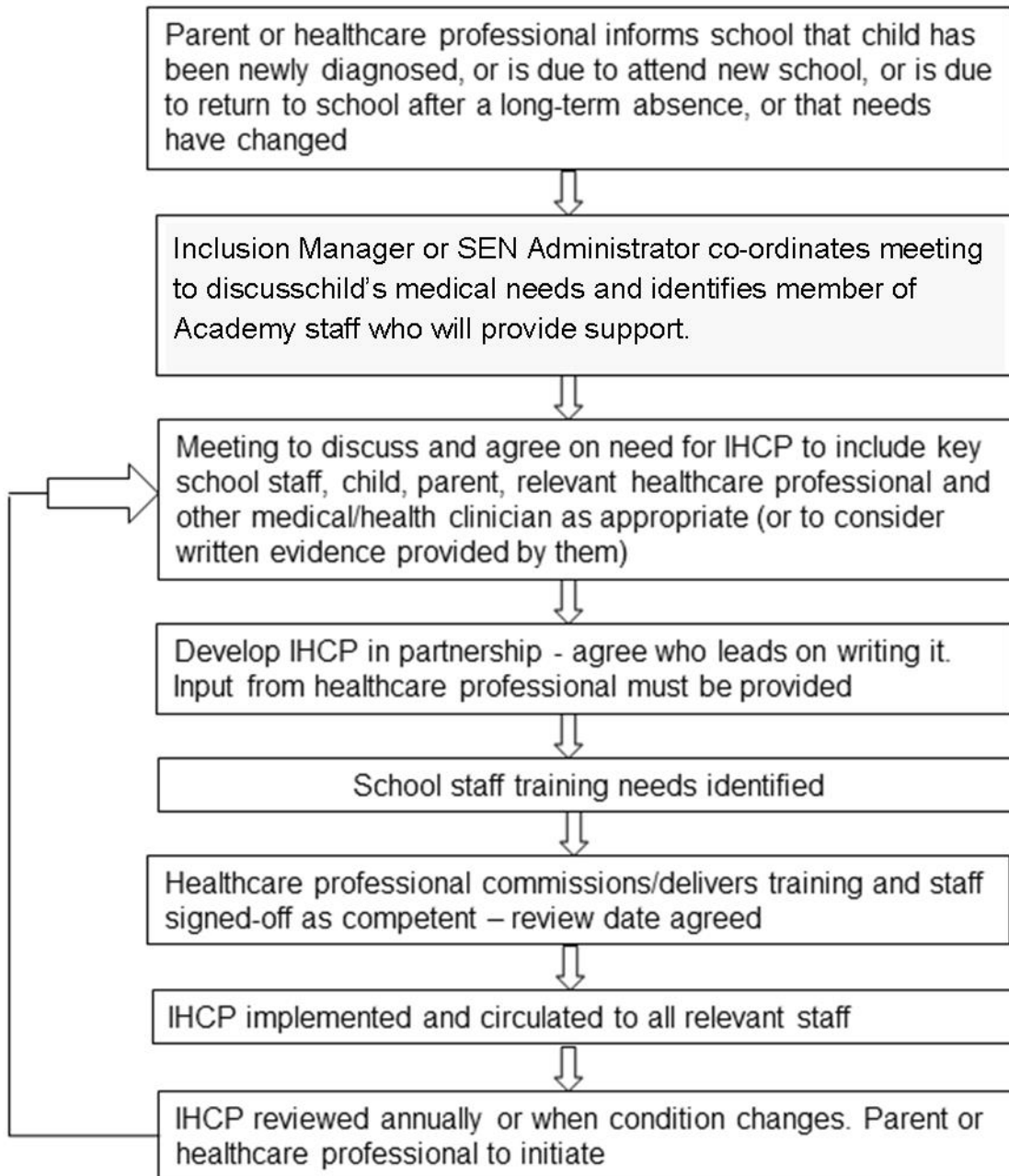
10 EQUALITY IMPACT STATEMENT

We will do all we can to ensure that this policy does not discriminate, directly or indirectly. We shall do

this through regular monitoring and evaluation of our policies. On review we shall assess and consult relevant stakeholders on the likely impact of our policies on the promotion of all aspects of equality, as laid down in the Equality Act (2010). This will include, but not necessarily be limited to: race; gender; sexual orientation; disability; ethnicity; religion; cultural beliefs and pregnancy/maternity.

DRAFT

APPENDIX 1: PROCESS FOR DEVELOPING INDIVIDUAL HEALTHCARE PLANS



APPENDIX 2: LEAF ACADEMY TRUST INSURANCE INFORMATION

Travelers Insurance Company –cover for all LEAF Academy Trust sites for First Aid and other medical requirements of students.

DRAFT